

SACRED CURRENTS

feng shui



The Thaw Season

March 5, 2011

I realize that we don't all spend the winter in a frozen tundra but for those of us that do, we really welcome this thawing season. Today is actually a spring like day in NYC and I am thrilled. I can see the sidewalk and grass beneath my feet.



On the bagua or feng shui template, we are now in 1 of the 2 'mid-seasons'. This time of year between winter and spring (which is now officially just a two weeks away) is referred to as 'Ken' or the Mountain. Here are some of the qualities of this time and sector:

- English Reference - Knowledge, self-cultivation*
- Family Member - Youngest (3rd) son*
- Quality - Stillness, hidden, resistant, knowledgeable*
- Element - Earth*
- Direction - Northeast*
- Season - Mud season, between winter & spring*
- Natural Phenomenon - Mountains, caves*
- Parts of Body - hands, back, bones*
- Characteristics - Secretive, independent, skillful, spiritual*
- Material things - Stone bowl, earth, stone, clay*
- Shape - Square, mountain shape*
- Color - Earth tones and dark blue*
- Number - 8*
- Astrological animal - Ox, Tiger*
- Hour - 1am - 5am*
- Month - February, March*
- Chinese Name - Ken, Gen*

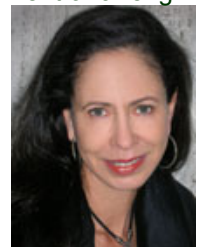
As we emerge from our 'cave' of winter, just before the full celebration of spring, I remind myself to take the time to reflect on the past 6 months. A time that we moved into darkness or the most 'yin' time of year. Much can be learned when our senses draw in.

We have now begun the process of moving towards the light or the most 'yang' time of year in summer. If you didn't get to do some of the [rituals recommended](#) on my site for the Chinese New Year, it is not too late. Intention is everything! I for one have just had the opportunity to burn the red envelopes I've collected from my clients over the past 2 years, as it is not always possible for a city girl to have a fire ceremony on Chinese New Year. It was worth the wait - the 2+ hour burning ritual offered up much gratitude for what's been accomplished by all of us whose hands and lives touched those envelopes.



[Please be in touch](#) if you would like support in customizing a ritual for your life, to have a space clearing/blessing ceremony for your environment or a feng shui design consultation.

Wishing you a warming thaw....Judith Wendell / Sacred Currents



Did you read this [NYT piece](#)?

www.sacredcurrents.com 212-410-1832